

New Marine Propulsion Lineup for Africa

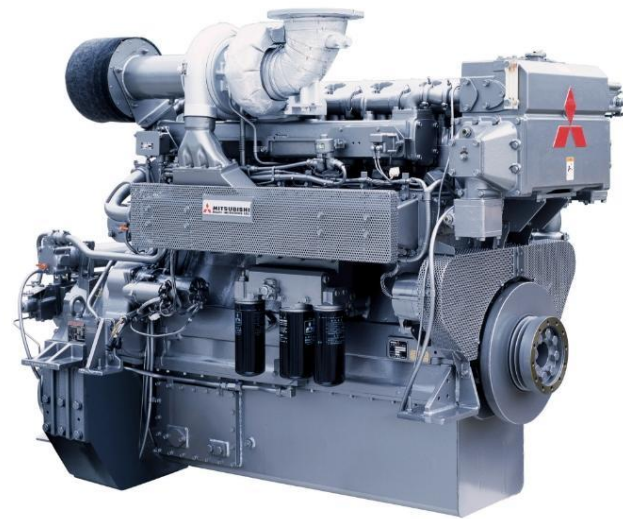
<<proposal for first feedback>>

NOTE : This information is preliminary and non-committed. It does not constitute an offer and is purely for discussion purpose.

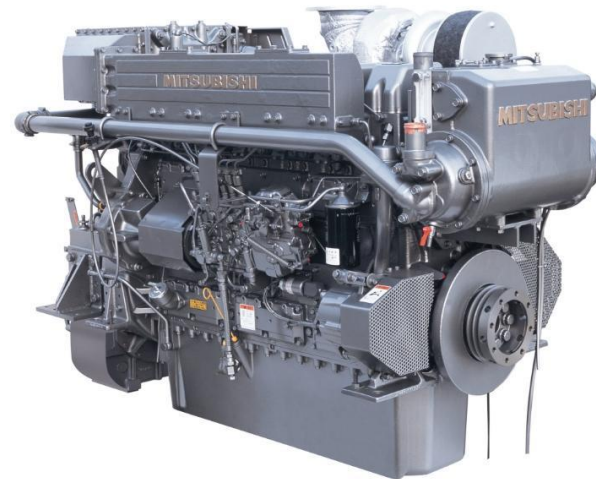
June 2026

Mitsubishi Turbocharger and Engine Europe B.V.

- The marine propulsion market is important and growing in emerging markets / Africa
- Fishing and tug boat market is the focus point
- Competition is getting more tough



- We want to take a bigger piece of the market together with you
- So we have new strategic approach for Africa
- New lineup for Africa of propulsion packs
 - More competitive
 - Wellknown and durable
 - Scope is fixed (no possibility for changes)
 - We will start stock holding



Series (note scope is not including gearbox)

S6B3 Series



S6R Series



S12A2 Series



S16R Series



S6A3 Series



S6R2 Series



S12R Series



S16R2 Series



New lineup, pricing and scope

Model		Medium Duty (MD) Output	Heavy Duty (HD) Output	Unrestricted Continuous (UCD)	Current SLP	New SLP (target)
Non-emission	S6B3-MPTK	N/A	380kW/2000rpm	345kW/1940rpm	€ 60,289.00	€ 53,000.00
	S6A3-MPTK2	526kW/1960rpm	494kW/1900rpm	N/A	€ 80,994.00	€ 75,000.00
IMO2	S6A3-T2MPTK3L/M	558kW/1900rpm	502kW/1900rpm	N/A	€ 85,409.00	€ 81,000.00
	S6R-T2MPTK	605kW/1800rpm	520kW/1650rpm	470kW/1600rpm	€ 94,621.00	€ 85,000.00
	S6R-T2MPTK2	691kW/1696rpm	610kW/1637rpm	N/A	€ 102,715.00	€ 90,000.00
	S6R2-T2MPTK	610kW/1500rpm	530kW/1400rpm	480kW/1350rpm		€ 87,000.00
	S6R2-T2MPTK3L/M/H	759kW/1406rpm	691kW/1406rpm	600kW/1350rpm	€ 115,554.00	€ 100,000.00
	S12A2-T2MPTK	858kW/1920rpm	776kW/1860rpm	701kW/1800rpm	€ 128,394.00	€ 120,000.00
	S12R-T2MPTK	1210kW/1800rpm	1040kW/1650rpm	940kW/1600rpm	€ 192,033.00	€ 180,000.00
	S12R-T2MPTK2	1342kW/1800rpm	1202kW/1650rpm	N/A		€ 190,000.00
	S16R-T2MPTK	1610kW/1800rpm	1380kW/1650rpm	1250kW/1600rpm	€ 239,482.00	€ 210,000.00
	S16R2-T2MPTK	1885kW/1500rpm	1600kW/1400rpm	1450kW/1350rpm	€ 295,864.00	€ 275,000.00
	S16R2-T2MPTK2	2095kW/1500rpm	N/A	N/A		€ 300,000.00
Standard Scope	Engine					
	Heat exchanger and Seawater Pump					
	Panel + Harness					
	Additional Alarm Panel + Sensor and Harness					
	Longer harness					
	EIAPP NKK IMO2 certificate (not for non emission engines)					
	Single walled fuel line					
	No class					
	Toho Electric Governor					

- Please indicate to Pieter and Farid how many you intend to buy of each model
- If interest is big enough we intend to start buying in July for delivery March (best case) FCA Mulhouse
- We expect you to carry stock (and we will also carry some stock)
- MHIET is fully booked so we want to get started now

